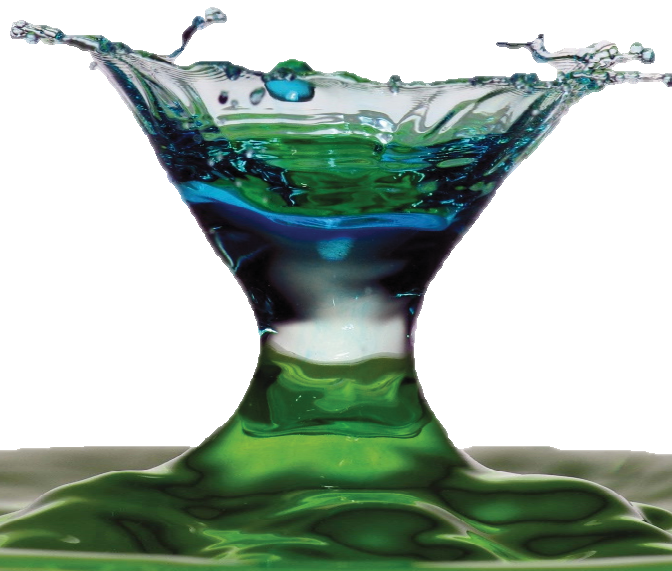
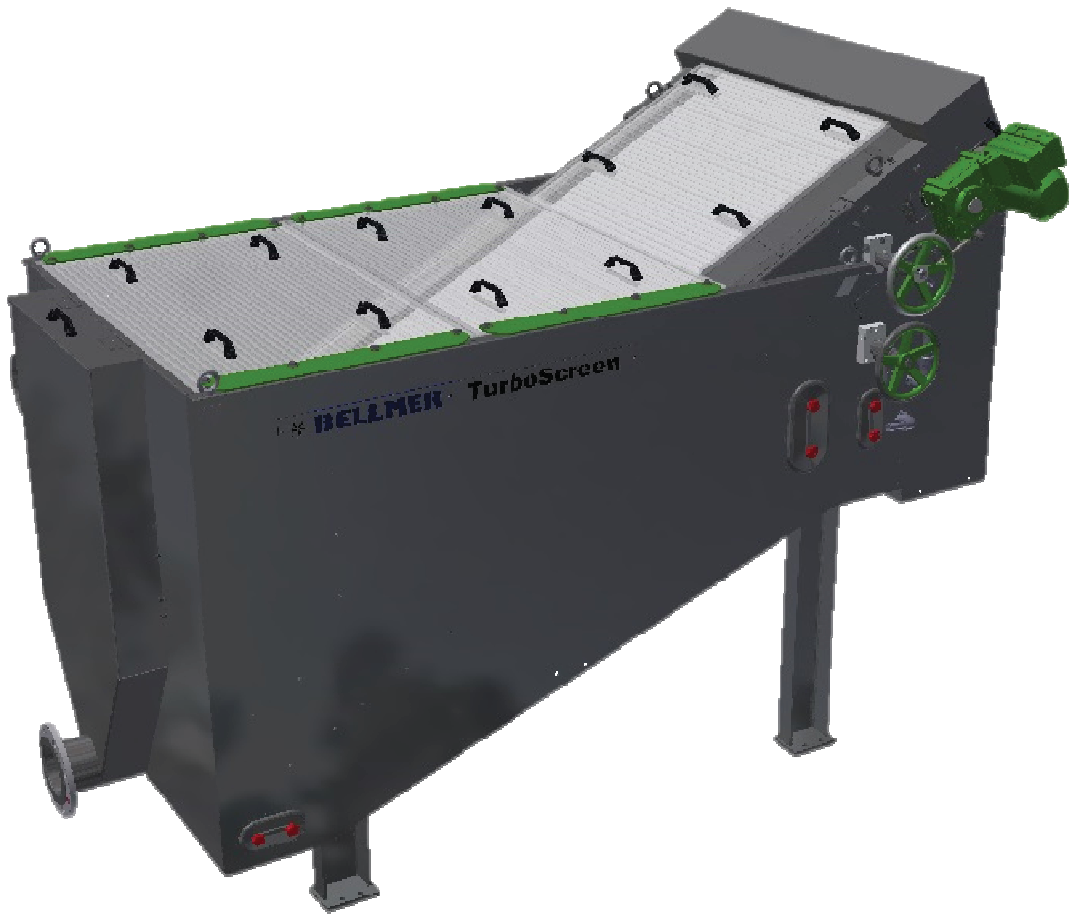


TurboScreen™

Voor meer informatie zie www.solis.nl



Efficient Process Water Filtration



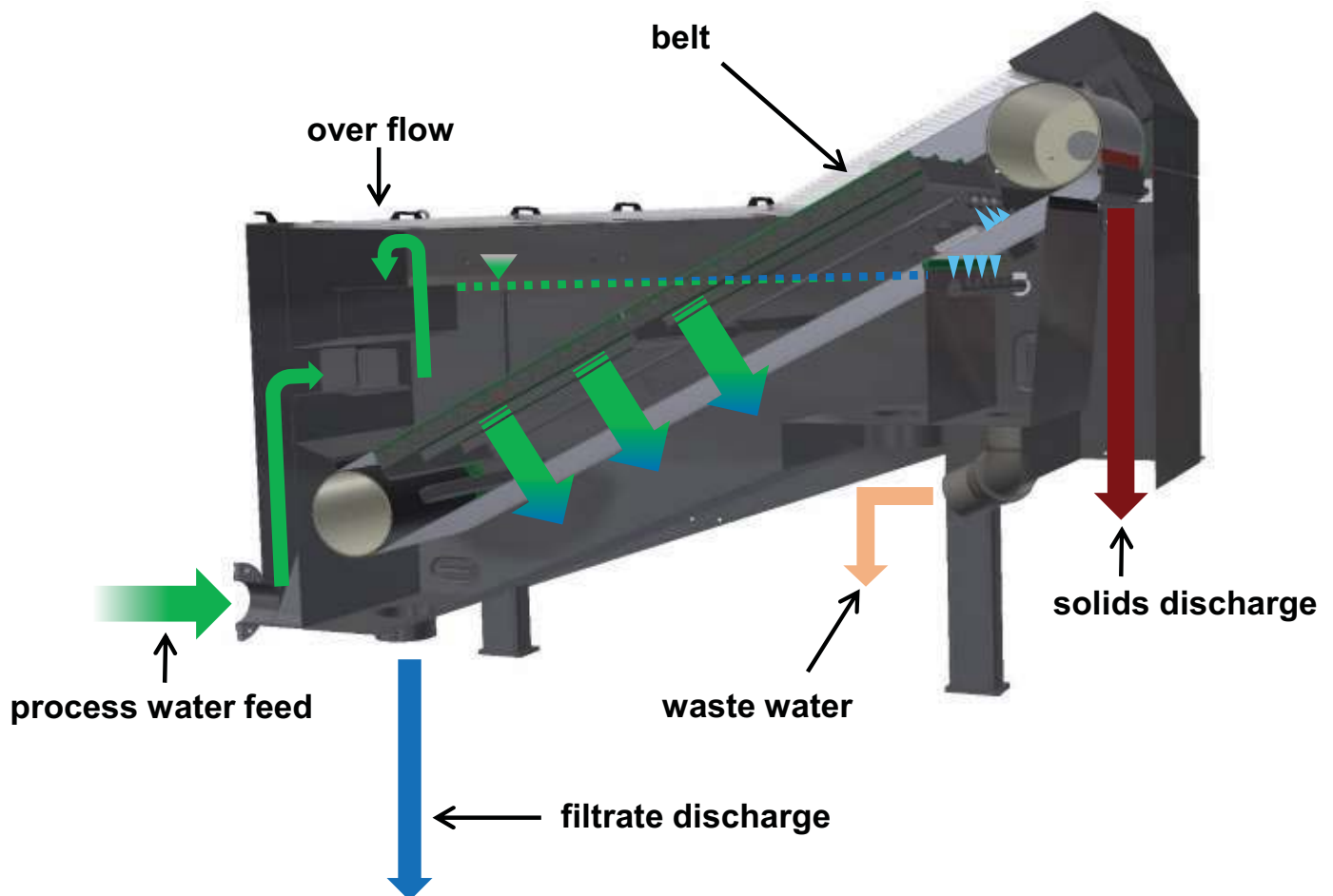
BELLMER

Separation Technology

Functional Principle...

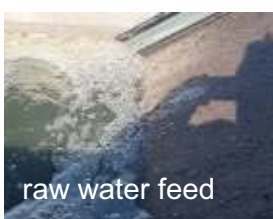
The unique functional principle of the **BELLMER TurboScreen™** is based on a filtration without adding any further additives.

The water to be processed flows via a special inlet in the filtration chamber, where the process water is being screened via a circulating belt. The solids remaining on the belt will be conveyed to the top via the circulating belt and dumped towards a discharge. The process water which is screened via the belt will drain off the filtrate discharge where it can be forwarded to whichever further downstream process.



The design of the belt grants a **high separation efficiency** and **COD reduction**. The transport of the belt is carried out by a special vulcanized toothed belt.

- ✓ solid BELLMER engineering with highest quality und reliability
- ✓ thick matter discharge via a special scraper (without compressed air)
- ✓ know-how from the sludge specialist
- ✓ energy-saving solution
- ✓ effective belt cleaning



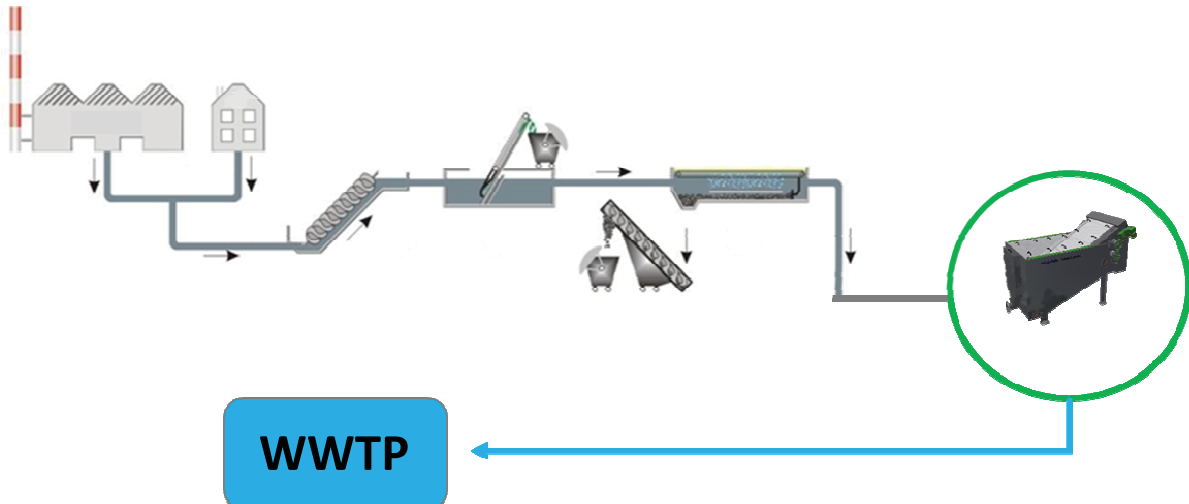
Your Application ...

solid separation / filtration tasks
in several applications, e. g.

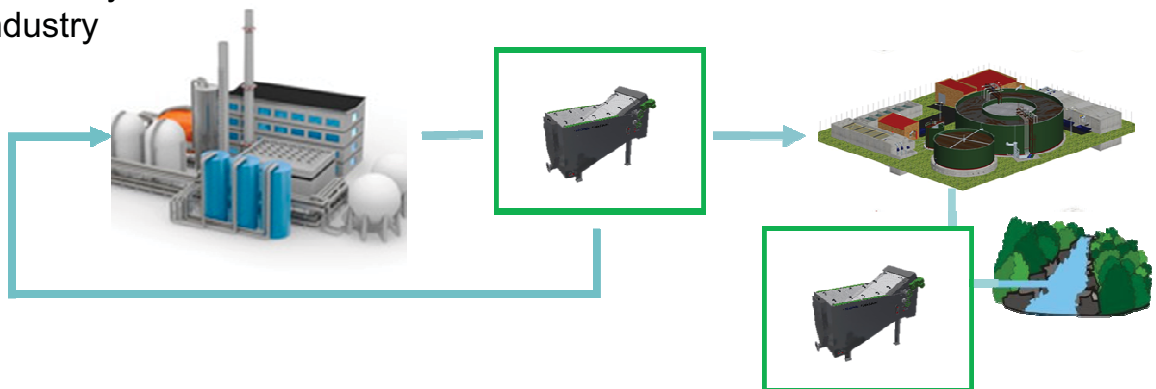
- primary sludge separation
- process water treatment

Recovery of valuable materials, e. g.

- fibres, fillers, granulates
- separation of solids up to 80 %
- COD reduction up to 40 %



- industrial process and waste water treatment
- municipal waste water treatment
- wood processing industry
- pharmaceutical industry
- chemical industry
- paper industry
- food industry
- ...



... test us



- ✓ reduction of suspended solids
- ✓ high COD reduction
- ✓ high throughputs
- ✓ low energy costs
- ✓ compact design
- ✓ clean and enclosed operation
- ✓ easy cleaning and handling



Gegr. 1842

BELLMER

Separation Technology

Gebr. Bellmer GmbH Maschinenfabrik • Hauptstraße 37-43 • 75223 Niefern-Öschelbronn • Phone +49 (7233) 74-0 • info.st@bellmer.de • www.bellmer.de

SOLIS Projects bv | Lelystad | T +31-(0)320-292020

Subject to technical modifications